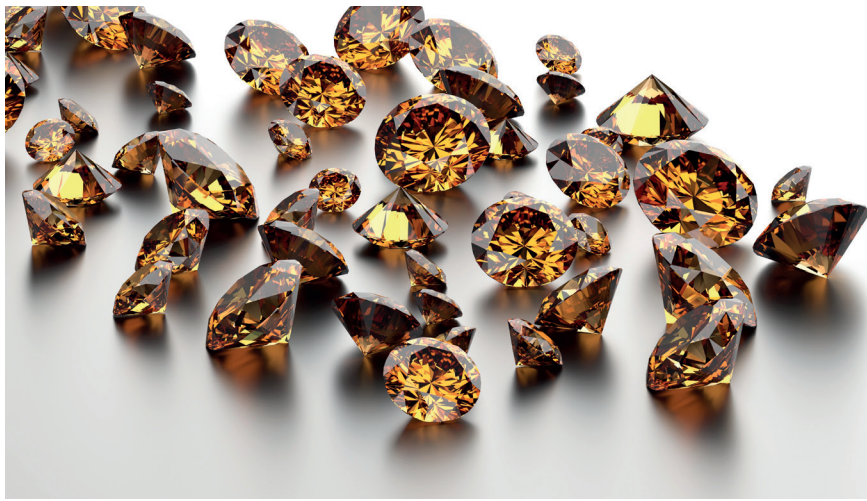


OTEC EF-SMART S GENTLE POLISHING PROCESS FOR DELICATE PARTS



ELECTRO FINISHING TECHNOLOGY – ECONOMICAL HIGH-GLOSS POLISHING





The EF-Smart S gently smooths and polishes gemstones or delicate jewellery and workpieces with complex geometries while maintaining their shape. Perfect process reliability, processing even in the smallest of corners, and extremely short process times combine top quality with high cost-effectiveness. Manual work steps are minimised.



Highlights

- Compact Electro Finishing Machine with ergonomically designed operating controls
- Processes free from acid and cyanide
- Processing even in hard-to-reach areas and inner contours
- Easy programming for reproducible processes
- No pre-polishing needed

EF-Smart S – overview:

- Dimensions: 450 x 610 x 605 mm
- Weight: 45 kg
- Power requirements: 230 V/50-60 Hz
- Easy to program multi-step processes using the direction of rotation, voltage, processing time and speed parameters
- Process container cover with 4 mounts, each for 6 workpieces (24 workpieces processable at once)
- Easy precious metal recovery via deposition on the cathodes
- Fast and easy container changes, enabling machine retooling from gold to silver processing in minutes
- No gemstone damage and excellent polish on settings without rounding
- Suitable for cast and 3D-printed jewellery



Try our OTEC Finishing Center!

We develop custom solutions to suit your specific requirements.



As a trusted global partner for perfect surfaces, OTEC builds innovative finishing machines which set high standards and achieve perfect process reliability. Revolutionising manual processing applications results in precise and consistent quality in the shortest possible process time.

Smooth surfaces every time, defined rounding results, the removal of burrs and a perfect sheen are decisive competitive advantages in almost all industrial sectors. In particular that means saving energy as well as extending the service life and increasing the durability of parts.

OTEC machines with the “Made in Germany” seal of quality stand for dependable technology, high-quality workmanship, reliable operation and a long service life.



OTEC Präzisionsfinish GmbH
Heinrich-Hertz-Straße 24
75334 Straubenhardt-Conweiler,
Germany +49 7082 4911 711
sales@otec.de
www.otec.de

